

Mitutoyo

Digimatic Coolant Proof Micrometer IP65 Dust/Water Protection

- Two measuring modes - ABS (absolute) and INC (incremental)
- Functions: Origin setting, inch/mm selection, zero-setting, data hold, error alarm, auto-sleep, data output
- Carbide tipped measuring faces
- ± 0.0005 Accuracy



Measuring Range	Resolution	Special Feature	Order No.	Regular Price	SALE
0 - 1 / 0 - 25.4mm	.00005/.001mm	Non-SPC Output	MT80-293-340†	158.00	134.95
0 - 1 / 0 - 25.4mm	.00005/.001mm	SPC Output	MT80-293-330†	213.00	199.95

E

MT971*144

Mitutoyo One Revolution Series 2 Dial Indicators

Reduce or eliminate reading errors with Mitutoyo's affordable one revolution indicator with the full sector bright red no-read zone. The fiberglass reinforced one-piece molded case makes these indicators lighter and more durable without sacrificing the accuracy you have come to depend on from Mitutoyo.



Graduation	Range	Dial Reading	Order No.	Regular Price	SALE
.0005"	.040"	20-0-20	MT80-2977	60.50	46.95
.001"	.060"	30-0-30	MT80-2978	66.00	52.95

D

MT1058*144

Mitutoyo Test Indicator with Ruby Stylus

- Wear characteristic improved by 50%
- Non magnetic and non conductive material enables use in EDM operations

Specifications

- Graduation: .0005"
- Measuring range: .03"
- Accuracy: ± 0.0005 "
- Measuring force: .07165" or less
- Contact point diameter: .79"
- Stem diameter: 3.8"



Order No. MT80-513-472
Regular Price \$129.00

SALE \$109⁵⁰

MT848*144

D

Mitutoyo

0.1" x .0001" Outside Micrometer

Special Purchase

- .0001" Graduation
- Carbide faces
- Ratchet stop and thimble lock



Order No. MT80-103-260-99
Regular Price \$76.40

SALE \$69⁵⁰

MT662*144

D

Mitutoyo

0-1"/0-25mm IDU Digimatic Indicator

- Easy to read LCD
- SPC output
- Slim design fits into tight spaces
- Battery powered for portability
- Functions include: in/mm conversion, zero-set and on/off
- Supplied with lifting lever 137693
- Flat back only
- Display- .0005"/0.01mm



Order No. MT80-575-123
Regular Price \$174.00

SALE \$169⁰⁰

MT633*144

E

Mitutoyo 5/16" - 6" Telescope Gage Set

- Self centering plungers
- Knurled knob on handle
- Locks on any setting

Order No. MT80-155-903
Regular Price \$183.00

SALE \$166⁵⁰



MT632*144

D

Mitutoyo

MyCal Lite and Plastic Calipers

My Cal Lite:

- Economically priced to allow everyone to benefit from the advantages of modern digital gages. No SPC output.
- Resolution: .001"/0.1mm
- Accuracy: ± 0.005 "



Plastic Caliper:

- Ideal for use in the lab, woodshop and classroom. Without SPC output and depth bar.
- Resolution: .001"/0.01mm
- Accuracy: ± 0.008 "



Measuring Range	Order No.	Regular Price	SALE
0 - 6 / 0 - 150mm	MT80-700-126	46.75	39.95
0 - 6 / 0 - 150mm	MT80-700-113	107.00	91.50
0 - 8 / 0 - 200mm	MT80-700-123	164.00	139.95

D

MT1010*144

Fowler Bore Gage Setting Master Kit

Use Fowler's NEW Bore Gage Setting Master Kit for accurately setting any bore gage up to 6" in diameter to an accuracy of .0001"!

Each Set Includes

- Setting Device**
- Base anvil: 2.750" x .80"
 - Adjustable anvil 2.375" x .375" (two each)
 - Internal capacity: 6"
 - Depth capacity: 1"
 - Centralizer capacity width: 2.625"
 - Quick release holder for fast adjustment

36 Pc. Economy Gage Block Set

- Tolerances to .00005"
- Certificate of Calibration to NIST
- High quality aluminum case!



Order No. NA55-5364600
Regular Price \$250.00

SALE \$164⁹⁵ MT1066*144

Fowler X-DEPTH 22" 0-22" Dial Depth Gage

Twice the range of competitive products!

- 0-1" Travel indicator
- .001" Graduations
- Rods connect together for full 22" capacity
- Satin chrome finish
- Base size: 4"
- Includes 2 extra points for small hole applications; one 0.078" dia. x 1" long and one needle point x 1" long
- Includes shop hardened case



Order No. NA55-52125006
Regular Price \$152.00

SALE \$59⁹⁵ MT975*144



Fowler .030" Test Indicator

- Bi-directional constant clockwise rotation
- Automatic reversal
- Range: .030"
- 0-15-0 Dial reading
- 1" Diameter
- Point length: 1/2"
- Graduations: .0005"
- Three dovetail mountings
- Three contact points with diameters of .040", .080" and .120"
- Jewelled movement
- Two dovetail extensions

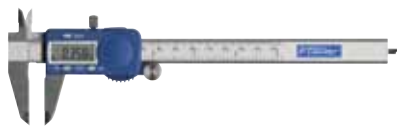


Order No. NA55-52562778
Regular Price \$99.95

SALE \$49⁹⁵ MT776*144

Fowler XTRA-VALUE Electronic Caliper

- Stainless steel frame
- Large easy-to-read display
- Resolution: .0005"/.01mm
- Direct inch/metric conversion
- 4 Way measuring
- Complete in case



Range	Order No.	Regular Price	SALE
0 - 12/0 - 300mm	NA55-541013001	90.00	76.95
0 - 6 / 0 - 150mm	NA55-541011501	45.00	26.95

MT951*144

Fowler X-TREAD

Tire Tread Thickness Gage
Inch/Metric/Fraction

- Spring-loaded and hold measurement button for ease-of-use
- Super-large display
- Range: 1"/25mm
- Resolution: .0005"/.01mm, fractions in 1/64 increments
- Supplied in vinyl holster

Order No. NA55-54225500
Regular Price \$19.95

SALE \$11⁹⁵



MT954*144

Fowler Electronic Edge Finder

- Repeatability: .0002"
- Edge finder lights instantly when stylus touches work edge
- Read off any electrically conductive metal
- Furnished complete with bulb, AAA alkaline battery and protective sleeve
- Six lights provide better visibility at any angle

Order No. NA55-54575600
Regular Price \$28.00

SALE \$22⁵⁰



MT961*144

Fowler Dial Bore Gage Sets with Carbide Anvils

- Easy to read
- Graduation: .0005"
- Chrome plated handle
- Insulated grip
- Includes extension holder and fitted case

Total Range	Order No.	Regular Price	SALE
.7 - 1.5"	NA55-52646100	120.95	76.95
2 - 6"	NA55-52646300	99.95	76.95



MT1081*144

Fowler Long Range Dial Calipers

- .100" per revolution
- .001" dial graduations
- Covered rack
- Depth rod
- Hardened stainless steel rack
- Supplied in shop-hardened case

Range (in.)	Order No.	Regular Price	SALE
0 - 18	NA55-52008018	207.95	136.95
0 - 24	NA55-52008024	252.00	169.95

MT1030*144

Fowler XTRA-VALUE 9" Electronic Level

Fowler's 9" Laser Level provides instant 4 x 90° digital inclination display. With embedded magnets on its measuring surface, a beamsplitter projects a 90° laser cross hair for leveling at a distance. It also includes a 1/4-20 mount for tripod use.

- Measuring range: 4 x 90°
- Resolution: .05°
- Accuracy: ±.2"
- Repeatability: ±.05°
- Standard 9 volt battery (250 hours life)
- Dimensions: 9"L x 1"W x 2-1/4"H
- Includes two way level and plumb vials
- Reversible reading for inverted use
- Bar not included



Order No. NA55-54440600
Regular Price \$59.95

SALE \$49⁹⁵

MT1082*144

Starrett®

No. 799A Basic Electronic Caliper - No SPC Output

- Resolution on .0005" (0.01mm)
- Lightweight, ergonomic design
- Zero at any position
- Automatic shut-off after 5 minutes of non-use
- Last measuring position retained when shut off
- Hardened stainless steel body
- Integrated depth rod on all sizes
- Lock screw and fine adjustment thumb wheel
- With Case



Model No.	Measuring Range (in./mm)	Order No.	Regular Price	SALE
799A-6/150	0 - 6 / 0 - 150mm	MV70-67410	140.00	134.50
799A-8/200	0 - 8 / 0 - 200mm	MV70-67412	198.00	190.50
799A-12/300	0 - 12 / 0 - 300mm	MV70-67621	372.00	334.95

E

MT785*144

Starrett® 1202 Series Dial Calipers

- Graduation: .001", .100" per revolution†
 - Sharp, black graduations on the satin finished bar
 - Thumb operated adjustment and lock screws
 - Anti backlash control
 - Hardened stainless construction
- † 1202F has 1/64" graduations on the yellow outer scale, and .01" on the white inner scale.



Model No.	Measuring Range	Order No.	Regular Price	SALE
1202-4	0 - 4	MV70-68814	70.00	63.00
1202-6	0 - 6	MV70-67472	129.00	116.10
1202F-6	0 - 6 Fraction	MV70-68931	98.00	88.20
1202-8	0 - 8	MV70-67473	139.00	125.10
1202-12	0 - 12	MV70-67474	202.00	181.80

E

MT794*144

Starrett®

Tru-Lok® Measuring Tapes

- Tought Tip® blade protector
- Rugged, chrome color impact resistant case



Model Number	Length	Width	Order No.	Regular Price	SALE
C1212	12"	1/2"	MV80-65418	9.95	8.95
C125	25"	1"	MV80-65366	13.70	10.95

D

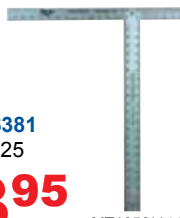
MT1055*144

Starrett® Giant Aluminum Square No. DS Series

- Heavy duty 54" x 2" blade
- 22" x 1-1/2" offset head
- 3/16" Thick blade
- Graduations: 8ths & 16ths

Order No. **MV80-36381**
Regular Price \$29.25

SALE \$23⁹⁵



MT1056*144

D

Starrett® EXACT™

Aluminum Straight Edge Rules

- English measure
- Flexible anodized aluminum 2" Width
- 1/8" & 1/16" Graduation



Model No.	Length (in.)	Thickness (in.)	Order No.	Regular Price	SALE
ASE24	24	.081	MV80-36090	6.05	5.50
ASE36	36	.081	MV80-36091	7.75	6.20
ASE48	48	.125	MV80-36092	13.70	12.50

D

MT737*144

Starrett® Magnetic Base 660 Global Series

- Magnetic base indicator holder with triple-jointed arm
- Small, powerful magnetic base, with 70 lbs. holding force
- Three adjustable pivots controlled by a single knob for fast, easy indicator positioning

Order No. **MV70-68621**
Regular Price \$109.00

E SALE \$102²⁰



MT766*144

Starrett® SK-1 Key Caddy

Heavy duty die cast case with a 21" stainless steel chain, large key ring and belt clip. Returns keys and other articles automatically. Great for welders to carry torch ignitors. Available with regular belt clip that clips over belt.

Order No. **MV80-63135**
Regular Price \$10.15



D SALE \$8⁶⁵

MT1033*144

Starrett®

Class ZZ Gage Pin Sets (+/- .0002" Tol.)

- Color coded, fully adjustable, Go/No-Go gage handle furnished with each set
- Full inspection report with every set
- 0.001" Increment sets
- Each pin is centerless lapped to a 10RA micro-inch finish and is clearly etched with the stated size
- All gages are 2" long, centerless lapped, and hardened to RC 60/62
- All sharp corners are broken



Size Range	No. of Pieces	Weight	Minus (No Go)			Plus (Go)		
			Order No.	Regular Price	SALE	Order No.	Regular Price	SALE
.011 to .060	50	3 lbs.	MV70-67481	66.00	61.90	MV70-67480	66.00	61.90
.061 to 250	190	8 lbs.	MV70-67483	146.00	136.90	MV70-67482	146.00	136.90
.251 to 500	250	22 lbs.	MV70-67485	221.00	207.20	MV70-67484	221.00	207.20

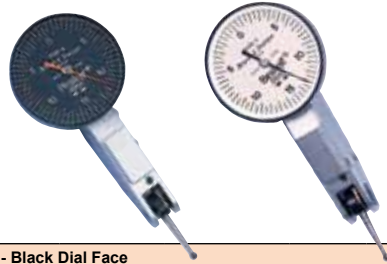
E

MT708*144

brooks & sharpe BesTest® Dial Test Indicators

BesTest Indicator Features:

- Constant clockwise rotation
- Automatic reversal
- Swiveling point
- Carbide tip point
- Universal mounting
- Monoblock (precision watch) body design
- Anti-magnetic & corrosion resistant



Face Color - Black Dial Face									
Range (in.)	Dial Reading	Graduation (in.)	Dial Face Dia. (in.)	Contact Length (in.)	Point Dia. (in.)	Model No.	Order No.	Regular Price	SALE
.008	0-4-0	.00005	1-1/2	1/2	.080	599-7033-5	MV45-51738	219.00	194.95
.008	0-4-0	.0001	1	1/2	.080	599-7032-5	MV45-51737	208.00	169.95
.020	0-10-0	.0005	1	1-7/16	.080	599-7034-5	MV45-51735	192.00	182.95
.020	0-10-0	.0005	1-1/2	1-7/16	.080	599-7035-5	MV45-51736	211.00	187.95
.030	0-15-0	.0005	1	1/2	.080	599-7030-5	MV45-51733	155.00	128.95
.030	0-15-0	.0005	1-1/2	1/2	.080	599-7031-5	MV45-51734	172.00	152.95
.030	0-15-0	.001	1	1/2	.080	599-7029-5	MV45-51732	153.00	124.95

Face Color - White Dial Face									
Range (in.)	Dial Reading	Graduation (in.)	Dial Face Dia. (in.)	Contact Length (in.)	Point Dia. (in.)	Model No.	Order No.	Regular Price	SALE
.008	0-4-0	.00005	1-1/2	1/2	.080	599-7033-3	MV45-45981	261.00	239.95
.008	0-4-0	.0001	1	1/2	.080	599-7032-3	MV45-45980	226.00	200.95
.030	0-15-0	.0005	1	1/2	.080	599-7030-3	MV45-45978	202.00	180.95
.030	0-15-0	.0005	1-1/2	1/2	.080	599-7031-3	MV45-45979	208.00	184.95
.030	0-15-0	.001	1	1/2	.080	599-7029-3	MV45-45977	194.00	179.95

E

MT750*144

brooks & sharpe

Ultra Precision Ground 1-2-3 Blocks

- Precision ground on all six surfaces
- Case hardened (HRC 55-60)
- Surface finish from 6 to 16 microinches
- Square on all side to within .0001"
- 23 Holes: 5 tapped 3/8"-16, 18 untapped thru holes



Order No. MV45-26764
Regular Price \$76.00

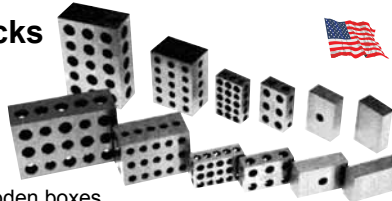
SALE \$70.95

E

MT042*144

Suburban Precision Tri-blocks

- Made of hardened steel, ground on all six sides
- B-123-H1-M has one 1/2" through hole in 2" x 3" face
- 11 Hole models have 5/16-18 tapped holes
- 23 Hole models have 3/8-16 tapped holes
- All models except PB123, furnished in fitted wooden boxes
- B-123-H11-M, B-123-H23M, B-234-H23-M & B-246-H23-N have drilled, counterbored & tapped holes to allow screw mounting and conversion into angle plates & other precision set-ups.



Size	Increments	Thickness	Weight	Order No.	Regular Price	SALE
1 x 2 x 3 0.0001"	Single	0.0002 total	2 lbs.	NJ50-PB123	64.00	56.75
1 x 2 x 3 0.0001"/0.0003"	Pair	0.0001 per in.	3 lbs.	NJ50-BB123H11M	105.00	93.25
1 x 2 x 3 0.0001"/0.0003"	Pair	0.0001 per in.	3 lbs.	NJ50-B123H23M	96.00	84.95
1 x 2 x 3 0.0001"/0.0003"	Pair	0.0001 per in.	3 lbs.	NJ50-B123NHM	80.00	70.95
1 x 2 x 3 0.0002"	Pair	0.0001 per in.	3 lbs.	NJ50-BB123H1M	93.00	82.50
2 x 3 x 4 0.0001"/0.0003"	Pair	0.0001 per in.	12 lbs.	NJ50-B234H23M	330.00	292.95
2 x 4 x 6 0.0001"/0.0003"	Pair	0.0001 per in.	19 lbs.	NJ50-B246H23M	509.00	449.95

E

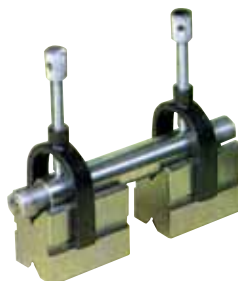
MT830*144

NATIONAL V-Block Set



- A precision set for toolmakers & machinists
- Made of hardened tool steel machined and ground in pairs to close tolerances
- Clamping capacity 1"
- Two V-blocks and two clamps are included in the set

Capacity (in.)	Size (in.)	Order No.	Regular Price	SALE
1	1-1/4 x 1-1/4 x 1-5/8	NG52-NVB117	22.90	14.95
1-1/2	1-5/8 x 1-3/4 x 2-3/4	NG52-NVB150	34.40	22.95



B

MT968*144



Blue Tempered Shim

Branded™ Shim from Precision Brand allows you to immediately identify your shim stock with precision accuracy.

- Thickness, width and tracing number clearly marked on shim
- Stock is high carbon 1095 hardened and tempered spring steel



Type - 2-Pack Blue Tempered Shim Stock Rolls				
Size (in.)	Thickness	Order No.	Regular Price	SALE
6 x 25	.008	MA52-23170	49.75	36.50
6 x 25	.010	MA52-23180	54.25	39.95
6 x 25	.012	MA52-23200	56.00	41.50
6 x 25	.015	MA52-23220	60.80	44.95
6 x 25	.020	MA52-23240	70.80	52.50
6 x 25	.025	MA52-23260	80.95	59.95
6 x 25	.032	MA52-23280	89.65	66.50

Type - Blue Tempered Shim Stock Rolls				
Size (in.)	Thickness	Order No.	Regular Price	SALE
3 x 50	.002	MA52-23110	41.95	29.95
5 x 50	.003	MA52-23120	44.00	31.95
5 x 50	.004	MA52-23130	47.55	34.95
6 x 50	.005	MA52-23145	41.95	30.95
6 x 50	.006	MA52-23155	41.75	30.75
6 x 50	.007	MA52-23165	42.60	31.50

C

MT970*144

Empire Protractors/Angle Meters

Magnetic POLYCAST® Protractor

- Magnetic base and back
- Easy reading dial with adjustable angle pointer
- Built in angle pitch calculator on back
- Polycast® construction

Small Angle Magnetic Protractor

- Magnetic base
- Full view acrylic vial protractor dial is graduated in 5° increments
- Durable Polycast® construction



Order No. KP75-36
Regular Price \$12.60

Order No. KP75-361
Regular Price \$7.90

D SALE **\$10⁹⁵**

SALE **\$6⁹⁵** MT934*144

Lufkin® Autolock 25' Measuring Tape

- Non-slip Rubber Grip & Hi-Viz® ABS Plastic body
- Automatic Blade Lock
- Recessed Lock Release to reduce accidental retraction

XL Power Return Tape, Hi-Viz® Case, Cushion Grip

- 1-3/16" x 25'
- New blade designed to achieve 10' stand-out
- Soft touch lock button
- Rubber cushion absorbs impact and improved grip
- Clearcoat blade protection and 4-rivet end hook
- Easy on/off belt clip



Order No. MZ50-AL725
Regular Price \$9.00

Order No. MZ50-AL725MAG
Regular Price \$11.70

Order No. MZ50-XL8525
Regular Price \$14.00

SALE **\$7²⁵**

SALE **\$9⁵⁰**

SALE **\$11²⁵**

D MT915*144

NNOGA Heavy Duty Magnetic Base and Procheck Indicator Set

Noga Magnetic Base

- Central locking mechanism
- Powerful 176 lbs. force on/off magnetic base
- Easy 3 dimensional set-up

Procheck AGD 2 Style Dial Indicator

- 0-1" travel with 0-100 dial and .001" graduation
- Revolution counter
- Mount with 3/8" stem or lug back (supplied)

22pc Point Set

- 22 contact points (4-48 thread)



Order No. NB65-DG61003DPK
Regular Price \$129.95

D SALE **\$89⁹⁵**

MT1065*144

NATIONAL Magnetic V-Block

- Holds work piece on any flat ferrous surface, including a permanent magnet chuck (without energizing the chuck)
- Two vees: 3/4" diameter for smaller workpiece 2-1/2" for larger workpiece
- Energized or de-energized control handle
- Can be used up right or standing on end
- 2-3/4" x 3-3/4" x 4"



Order No. NH50-E934
Regular Price \$119.00

B SALE **\$79⁹⁵**

MT1070*144

NNOGA Dial Gage Holders with Power On/Off Magnetic Base

- Top Clamp Holds 3/8" Stem and Dovetail
- Central locking mechanism with spring loaded bearing
- NNOGA dial gage holder is 3-dimensional
- Most powerful on/off magnetic base



Description - Power On/Off with Fine Adjustment on Top Clamp-Standard Arm					
Spindle (Arm) Length	Style	Holding Force	Order No.	Regular Price	SALE
4.33 x 3.98	Standard	176LBF	FN60-DG61003	104.30	84.95

Description - Power On/Off with Fine Adjustment at Base-Standard Arm					
Spindle (Arm) Length	Style	Holding Force	Order No.	Regular Price	SALE
4.33 x 3.98	Standard	176LBF	FN60-DG10533	111.60	90.95

Description - Power On/Off with Fine Adjustment on Top Clamp-Long Arm					
Spindle (Arm) Length	Style	Holding Force	Order No.	Regular Price	SALE
5.26 x 5.24	Long	176LBF	FN60-MG61003	131.00	107.50

Description - Power On/Off with Fine Adjustment at Base-Long Arm					
Spindle (Arm) Length	Style	Holding Force	Order No.	Regular Price	SALE
5.26 x 5.24	Long	176LBF	FN60-MG10533	138.25	113.50

Description - Power On/Off with Fine Adjustment on Top Clamp					
Spindle (Arm) Length	Style	Holding Force	Order No.	Regular Price	SALE
12.8 x 9.5	"Big Boy" Super Long	290LBF	FN60-MA61003	213.45	174.95
6.43 x 4.45	Extra Long	180LBF	FN60-MG71003	145.55	119.50

D MT868*144

PRO-CHECK Tri-Block Sets

Premium 1-2-3 Block Set

- .0001" - .0003" Tolerance
- Fitted plastic case

Economy Tri Blocks

- One pair of each: 1-2-3, 2-4-6 or metric sizes
- Hardened 55 to 62 HRC
- Tolerance .0003" to .0005" (0005mm-.010mm for metric blocks)



Size (in.)	Order No.	Regular Price	SALE
1 x 2 x 3	NM52-E123	14.90	9.95
1 x 2 x 3	NM52-PR123	29.90	21.50
2 x 4 x 6	NM52-PR246	129.90	72.95
25 x 50 x 75mm	NM52-E25M	21.90	15.95

B MT200*144

PRO-CHECK Stainless Steel Dial Calipers

- Range per revolution .001" inch
- Covered rack for longer caliper life, keeps chips out
- Measuring face hardened stainless, ground and lapped
- Satin-chrome finish
- Complete with fitted case



Measuring Range (in.)	Order No.	Regular Price	SALE
0 - 4	NB60-CDC4	29.50	14.95
0 - 6	NB60-CDC6	29.90	15.50
0 - 8	NB60-CDC8	49.90	29.95
0 - 12	NB60-CDC12	68.90	39.95

C Metric on scale only MT945*144

PRO-CHECK Pull Mount All Position Indicator Holder

With .030" Range/.0005" Graduation Test Indicator



With Indicator
Order No. NB65-QK1B
Regular Price \$61.95

Holder Only
Order No. MV60-MQA178
Regular Price \$22.95

B SALE **\$39⁹⁵** SALE **\$12⁹⁵** MT1064*144

PRO-CHECK 6 Pc. Telescope Gage Set

- 5/16"-6" Range
- Self centering contact
- Satin chrome finish
- Hardened and ground contact ends



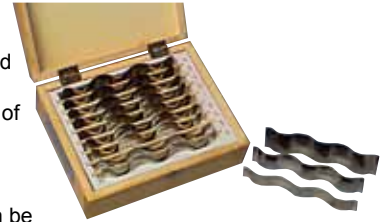
Order No. NN40-290100
Regular Price \$14.90

B SALE **\$9⁵⁰** MT242*144

PRO-CHECK Wavy Parallel Set



- 9 Pairs - 1/2" to 1-1/2" in 1/8" height increments
- Guaranteed to size in height and parallelism $\pm .0002$ "
- For use on: Precision clamping of parts in drilling, boring, milling, grinding, assembly work, etc.
- Can be used as elastic shims
- Thin and fragile workpieces can be secured without damage
- Made of high quality spring steel, hardened, stress relieved and precision ground



Order No. NM55-WPS9
Regular Price \$59.90

SALE **\$36⁹⁵**

D MT1072*144

PRO-CHECK Small Hole Gage 1/8"-1/2"

- Range: .125 - .500"
- Knurled knob for size adjustment
- Gaging surface fully hardened for long life
- Extra long for gaging deep & shallow holes
- Hole size obtained by measuring over contact points with micrometer
- Case included



Order No. NN40-290200
Regular Price \$16.90

B SALE **\$9⁹⁵** MT1073*144

PRO-CHECK Precision Angle Block Sets

A simplified, accurate and quick method for angle set-ups in tooling, production and inspection.

- Furnished in 1° increments to 5° and in 5° increments to 30°
- Hardened and precision ground
- Accuracy $\pm .0001$ " per inch
- Size 3" long x 1/4" thick
- Ten block set in fitted case



Order No. NJ50-AB10ST
Regular Price \$237.00

Order No. NM51-PAB10
Regular Price \$43.90

E SALE **\$209⁹⁵** SALE **\$24⁹⁵** MT1074*144

PRO-CHECK Precision Parallel Set

4 Matched Pairs of 3/16" and 1/2" Width



- Set of 4 matched pairs of hardened and ground parallels for use in set-up for drilling, milling and layout work
- Set Includes Sizes: 3/16" x 1.000 x 6", 3/16" x 1.250 x 6", 1/2" x 1.500 x 6", 1/2" x 1.750 x 6"

Order No. NM50-CP31612
Regular Price \$46.90

SALE **\$24⁹⁵**



D Tolerance: parallel to 0.0003" on 2 sides, top and bottom dimensions: within 0.001" allowances. Hardness: case hardened to RC 55 to 62 on 2 sides, Hardness: top and bottom only. MT1083*144